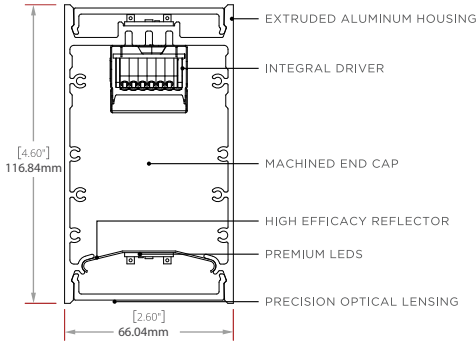


## Linear Series - Rectangle 2

### CABLE SUSPENDED



### PERFORMANCE

#### STATIC WHITE | FLOOD DIRECT & FLOOD INDIRECT

| POWER LEVELS | LIGHT DIRECT LM/4FT | LIGHT INDIRECT LM/4FT | TOTAL LIGHT LM/4FT | ENERGY WATTS/4FT | EFFICACY LPW | CCT/CRI |
|--------------|---------------------|-----------------------|--------------------|------------------|--------------|---------|
| VLO          | 2115                | 2323                  | 4438               | 32               | 139          | 4000/80 |
| LO           | 2964                | 3256                  | 6220               | 48               | 130          | 4000/80 |
| SO           | 3925                | 4311                  | 8235               | 64               | 129          | 4000/80 |
| HO           | 4722                | 5187                  | 9909               | 80               | 124          | 4000/80 |
| VHO          | 5696                | 6256                  | 11953              | 96               | 125          | 4000/80 |



### FEATURES:

- PRECISION OPTICAL LENSING OPTIONS OR HIGH TRANSMISSION FROSTED LENSING
- 1% DIMMING DRIVERS STANDARD
- ADJUSTABLE AIRCRAFT CABLE SUSPENSION SYSTEM
- EXTRUDED ALUMINUM HOUSING WITH NO VISIBLE FASTENERS
- MACHINED ALUMINUM END CAPS WITH EASY ACCESS REMOVAL
- BI-DIRECTIONAL FIXTURE
- UGR<19 IN SELECT OUTPUTS AND CONFIGURATIONS

#### CCT MULTIPLIERS STATIC WHITE

| CCT        | 2700K |      | 3000K |      | 3500K |      | 4000K |      | 5000K |      |
|------------|-------|------|-------|------|-------|------|-------|------|-------|------|
| CRI        | 80    | 90   | 80    | 90   | 80    | 90   | 80    | 90   | 80    | 90   |
| MULTIPLIER | 0.93  | 0.79 | 0.96  | 0.82 | 0.97  | 0.85 | 1     | 0.89 | 1.01  | 0.89 |



NOTE: ALL ITALICIZED OPTIONS MAY INCREASE LEAD TIME. PLEASE CONSULT FACTORY WITH QUESTIONS.

| FIXTURE MODEL | MOUNTING  | NOMINAL LENGTH (FT)  | CCT/CRI   | DIRECT POWER LEVEL <sup>1</sup>   | DIRECT BEAM DISTRIBUTION  | INDIRECT POWER LEVEL <sup>1</sup>   | INDIRECT BEAM DISTRIBUTION <sup>1</sup> | DRIVER  |
|---------------|---|--|---|---|---|---|---|---|
| LS-RCT-1      | <b>CS</b> Cable Suspended<br><i>CSD Cable Suspended Direct Only</i> | 2<br>3<br>4<br>5<br>6<br>7<br>8<br><i>CP<sup>3,4</sup> Custom Pattern</i><br><i>CR<sup>1</sup> Continuous Run (Specify Length in Nominal Feet)</i> | <b>827</b><br><b>830</b><br><b>835</b><br><b>840</b><br><b>850</b><br><b>927</b><br><b>930</b><br><b>935</b><br><b>940</b><br><b>950</b><br><i>TW2765</i><br><i>WD1827</i><br><i>RGBW<sup>1</sup></i> | <b>VL</b> Very low<br><b>L</b> Low<br><b>S</b> Standard<br><b>H</b> High<br><b>VH</b> Very High | <b>G</b> Graze<br><b>N</b> Narrow<br><b>F</b> Flood<br><b>F</b> Flood<br><b>W</b> Wall Wash<br><b>A</b> Aisle | <b>VL</b> Very low<br><b>L</b> Low<br><b>S</b> Standard<br><b>H</b> High<br><b>VH</b> Very High | <b>F</b> Flood<br><b>B</b> Batwing      | <b>1D</b> 0-10V EldoLED 1%<br><i>01D 0-10V EldoLED 0.1%</i><br><br><i>LDE1 Lutron Ecosystem 1%</i><br><i>LDE5 Lutron Ecosystem 5%</i><br><br><i>1DT (TW)<sup>2</sup></i><br><i>1DW (WD)<sup>2</sup></i><br><i>DMX8 Standard 8 bit (RGBW)<sup>4</sup></i><br><i>DMX16 Optional 16 bit (RGBW)<sup>4</sup></i><br><i>DALI (INTL)</i><br><i>IWS (Sensor Fixtures)<sup>3</sup></i> |
|               |   | 1. Power feed is always first section in a continuous run<br>3. See final page for CP specifications guide.<br>4. Finish must be powdercoated.     | 1. Pair only w/ power level(s) = S, beams = F   | 1. 2ft & 3ft - must have same power output for up and down                                      |   | 1. 2ft & 3ft - must have same power output for up and down                                      |   | 1. Driver must reside in remote housing<br>2. 0-10V input - CHOOSE DALI instead for INTL versions<br>3. Integrated Sensor options pair with IWS driver only   |

| HOUSING  | END CAPS FINISH  | CANOPY SIZE   | CANOPY FINISH   | POWER CORD   | CABLE LENGTH               | OPTIONS <sup>6</sup>  |
|--|--|---|---|--|----------------------------|---|
| <b>SC</b> Satin Clear Anodize<br><b>SW</b> Satin White Powder Coat<br><b>MB</b> Matte Black Powder Coat<br><i>CF Custom Finish (Consult Factory)</i> | <b>MF</b> Machined Finish<br><b>SW</b> Satin White<br><b>MB</b> Matte Black<br><i>CF Custom Finish (Consult Factory)</i> | <b>44</b> 4" Power feed canopy<br>4" Non-power feed canopy<br><b>44E</b> 4" Non-power feed canopy - International<br><b>40</b> 4" Power feed canopy<br>Canopy only at power feed<br><b>40E</b> 4" Power feed canopy<br>Canopy only at power feed - International<br><b>41</b> 4" Power feed canopy<br>1" Non-power feed canopy<br><b>41E</b> 4" Power feed canopy<br>1" Non-power feed canopy - International | <b>MF</b> Machine Finish<br><b>SW</b> Satin White<br><b>MB</b> Matte Black<br><i>CF Custom Finish (Consult Factory)</i> | <b>W</b> White<br><b>G</b> Gray <sup>1</sup><br><b>B</b> Black | <b>4</b> 4'<br><b>8</b> 8' | <b>EMB7<sup>1,3,6</sup></b> 7 Watt battery back-up (Approximately 600 lumens)<br><b>EMB12<sup>1,4,6</sup></b> 12 Watt battery back-up (Approximately 1000 lumens)<br><b>EMW<sup>1,2</sup></b> Emergency Circuit Wiring<br><i>WSN<sup>6</sup> nLight Sensor</i><br><i>WSE<sup>6</sup> WSE Enlightened Sensor</i><br><i>WSW<sup>6</sup> WSW Wavelinx Sensor</i><br><i>WSL<sup>6</sup> Lutron Vive Sensor Dual Circuit</i> |
|  |  |   |   | 1. Not available for INTL                                      |                            | 1. EMB/EMW only linked to first section of continuous run<br>2. EMW not available for 2ft/3ft lengths<br>3. EMB7 - 6ft and up<br>4. EMB12 - 7ft and up<br>5. EMB not available for combined 8ft length & VH power<br>6. Factory EMB and Sensor (WS) options not avail for INTL  |

### GENERAL NOTES:

All fixtures are UL listed for dry and damp locations. Fixtures with International (E) option designation are CE and ROHS compliant. INTEGRAL DRIVER for all options. Please contact the factory with any specification questions.

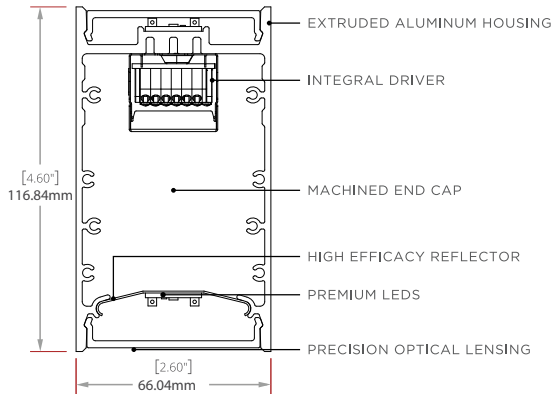


### FIXTURE ORIENTATION

Bidirectional (CS) for downlight and uplight applications.

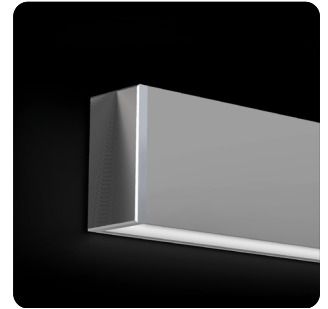
## Linear Series - Rectangle 2

### SURFACE MOUNT



#### FEATURES:

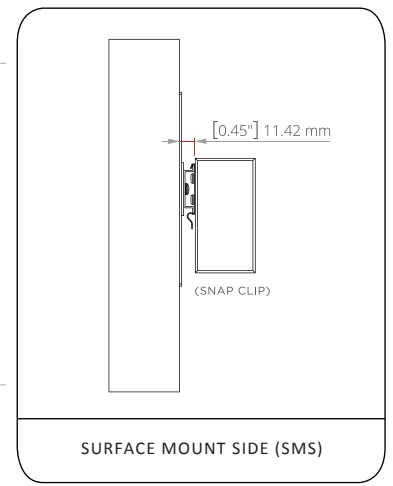
- WALL MOUNTING SYSTEM WITH PRE LOCATED FIXTURE HARDWARE FOR EASY SURFACE INSTALL
- PRECISION OPTICAL LENSING OPTIONS OR HIGH TRANSMISSION FROSTED LENSING
- 1% DIMMING DRIVERS STANDARD
- EXTRUDED ALUMINUM HOUSING WITH NO VISIBLE FASTENERS
- MACHINED ALUMINUM END CAPS WITH EASY ACCESS REMOVAL



NOTE: ALL ITALICIZED OPTIONS MAY INCREASE LEAD TIME. PLEASE CONSULT FACTORY WITH QUESTIONS.

| FIXTURE MODEL | MOUNTING   | NOMINAL LENGTH (FT)  | CCT/CRI    | DIRECT POWER LEVEL <sup>1</sup>                            | DIRECT BEAM DISTRIBUTION | INDIRECT POWER LEVEL <sup>1</sup>                          | INDIRECT BEAM DISTRIBUTION | DRIVER   |
|---------------|--|--|------------|--|--------------------------|--|----------------------------|--|
| LS-RCT-2      | <b>SMS</b> Surface Mount Side                          | <b>2</b>   | <b>827</b> | <b>VL</b> Very low   | <b>G</b> Graze           | <b>VL</b> Very low   | <b>F</b> Flood             | <b>1D</b> 0-10V EldoLED 1%<br><b>01D</b> 0-10V EldoLED 0.1%<br><br><i>LDE1</i> Lutron Ecosystem 1%<br><i>LDE5</i> Lutron Ecosystem 5%<br><br><b>1DT</b> (TW) <sup>2</sup><br><b>1DW</b> (WD) <sup>2</sup><br><b>DMX8</b> Standard 8 bit (RGBW) <sup>*</sup><br><b>DMX16</b> Optional 8 bit (RGBW) <sup>*</sup><br><b>DALI</b> (INTL)<br><b>TWS</b> (Sensor Fixtures) <sup>3</sup><br>1. Driver must reside in remote housing<br>2. 0-10V input - CHOOSE DALI instead for INTL versions<br>3. Integrated Sensor options pair with TWS driver only |
|               | <i>SMSE</i> Surface Mount Side - International         | <b>3</b>   | <b>830</b> | <b>L</b> Low   | <b>N</b> Narrow          | <b>L</b> Low   | <b>B</b> Batwing           |  |
|               | <b>SMSD</b> Surface Mount Side Direct                  | <b>4</b>   | <b>835</b> | <b>S</b> Standard  | <b>F</b> Flood           | <b>S</b> Standard  |                            |  |
|               | <b>SMSDE</b> Surface Mount Side Direct - International | <b>5</b>   | <b>840</b> | <b>H</b> High  | <b>W</b> Wall Wash       | <b>H</b> High  |                            |  |
|               |  | <b>6</b>   | <b>850</b> | <b>VH</b> Very High  | <b>A</b> Aisle           | <b>VH</b> Very High  |                            |  |
|               |  | <b>7</b>   | <b>927</b> |  |                          |  |                            |  |
|               |  | <b>8</b>   | <b>930</b> |  |                          |  |                            |  |
|               |  | <b>CR</b> <sup>1</sup> Continuous Run (Specify Length in Nominal Feet) | <b>935</b> |  |                          |  |                            |  |
|               |  |  | <b>940</b> |  |                          |  |                            |  |
|               |  |  | <b>950</b> |  |                          |  |                            |  |
|               |  | <i>TW2765</i>  |            |  |                          |  |                            |  |
|               |  | <i>WD1827</i>  |            |  |                          |  |                            |  |
|               |  | <i>RGBW</i>  |            |  |                          |  |                            |  |
|               |  | 1. Power feed is always at the first section in a continuous run       |            |  |                          |  |                            |  |
|               |  | 1. Pair only w/ power level(s) = S, beams = F                          |            |  |                          |  |                            |  |
|               |  |  |            | 1. 2ft & 3ft - must have same power output for up and down |                          |  |                            |  |
|               |  |  |            |  |                          | 1. 2ft & 3ft - must have same power output for up and down |                            |  |

| HOUSING FINISH   | END CAPS FINISH  | OPTIONS <sup>6</sup>  |
|--|--|---|
| <b>SC</b> Satin Clear Anodize<br><b>SW</b> Satin White Powder Coat<br><b>MB</b> Matte Black Powder Coat<br><b>CF</b> Custom Finish (Consult Factory) | <b>MF</b> Machined Finish<br><b>SW</b> Satin White<br><b>MB</b> Matte Black<br><b>CF</b> Custom Finish (Consult Factory) | <b>EMB7</b> <sup>1,3,6</sup> 7 Watt battery back-up (Approximately 600 lumens)<br>12 Watt battery back-up<br><b>EMB12</b> <sup>1,4,6</sup> (Approximately 1000 lumens)<br><b>EMW</b> <sup>1,2</sup> Emergency Circuit Wiring<br><i>WSN</i> <sup>6</sup> nLight Sensor<br><i>WSE</i> <sup>6</sup> WSE Enlighted Sensor<br><i>WSW</i> <sup>6</sup> WSW Wavelinx Sensor<br><i>WSL</i> <sup>6</sup> Lutron Vive Sensor<br><i>Dual</i> Dual Circuit<br><br>1. EMB/EMW only linked to first section of continuous run<br>2. EMW not available for 2ft/3ft lengths<br>3. EMB7 & EMB12 - 6ft lengths and up<br>4. EMB12 - 7ft and up<br>5. EMB not available for combined 8FT length & VH power<br>6. Factory EMB and Sensor (WS*) options not avail for INTL |



#### GENERAL NOTES:

All fixtures are UL listed for dry and damp locations. Fixtures with International (E) option designation are CE and ROHS compliant. INTEGRAL DRIVER for all options. Please contact the factory with any specification questions.



## Linear Series - Rectangle 2

### BIDIRECTIONAL

#### STATIC WHITE | FLOOD DIRECT & FLOOD INDIRECT

| POWER LEVELS | LIGHT DIRECT LM/4FT | LIGHT INDIRECT LM/4FT | TOTAL LIGHT LM/4FT | ENERGY WATTS/4FT | EFFICACY LPW | CCT/CRI |
|--------------|---------------------|-----------------------|--------------------|------------------|--------------|---------|
| VLO          | 2115                | 2323                  | 4438               | 32               | 139          | 4000/80 |
| LO           | 2964                | 3256                  | 6220               | 48               | 130          | 4000/80 |
| SO           | 3925                | 4311                  | 8235               | 64               | 129          | 4000/80 |
| HO           | 4722                | 5187                  | 9909               | 80               | 124          | 4000/80 |
| VHO          | 5696                | 6256                  | 11953              | 96               | 125          | 4000/80 |

#### CCT MULTIPLIERS, STATIC WH

| CCT   | 80CRI | 90CRI |
|-------|-------|-------|
| 2700K | 0.93  | 0.79  |
| 3000K | 0.96  | 0.82  |
| 3500K | 0.97  | 0.85  |
| 4000K | 1.00  | 0.89  |
| 5000K | 1.01  | 0.89  |

#### DYNAMIC WHITE | FLOOD DIRECT & FLOOD INDIRECT

| POWER LEVELS | LIGHT DIRECT LM/4FT | LIGHT INDIRECT LM/4FT | TOTAL LIGHT LM/4FT | ENERGY WATTS/4FT | EFFICACY LPW | CCT     |
|--------------|---------------------|-----------------------|--------------------|------------------|--------------|---------|
| VLO          | 1484                | 1630                  | 3115               | 48               | 65           | 4000/90 |
| LO           | 2081                | 2285                  | 4366               | 64               | 68           | 4000/90 |
| SO           | 2755                | 3025                  | 5780               | 72               | 80           | 4000/90 |
| HO           | 3314                | 3640                  | 6955               | 88               | 79           | 4000/90 |
| VHO          | 3998                | 4391                  | 8389               | 96               | 87           | 4000/90 |

#### CCT MULTIPLIERS, DYNAMIC WH

| CCT   | 90CRI |
|-------|-------|
| 2700K | 1.09  |
| 3000K | 1.08  |
| 3500K | 1.03  |
| 4000K | 1.00  |
| 5000K | 0.99  |
| 6500K | 0.98  |

#### WARM DIM | FLOOD DIRECT & FLOOD INDIRECT

| POWER LEVELS | LIGHT DIRECT LM/4FT | LIGHT INDIRECT LM/4FT | TOTAL LIGHT LM/4FT | ENERGY WATTS/4FT | EFFICACY LPW | CCT     |
|--------------|---------------------|-----------------------|--------------------|------------------|--------------|---------|
| VLO          | 1558                | 1712                  | 3270               | 48               | 68           | 2700/90 |
| LO           | 2184                | 2399                  | 4584               | 64               | 72           | 2700/90 |
| SO           | 2892                | 3176                  | 6068               | 72               | 84           | 2700/90 |
| HO           | 3480                | 3822                  | 7302               | 88               | 83           | 2700/90 |
| VHO          | 4197                | 4610                  | 8808               | 96               | 92           | 2700/90 |

#### CCT MULTIPLIERS, WARM DIM

| CCT   | 90CRI |
|-------|-------|
| 1800K | 0.02  |
| 2250K | 0.17  |
| 2700K | 1.00  |

#### RGBW | FLOOD DIRECT & FLOOD INDIRECT

| POWER LEVELS | CHANNEL (S) | LIGHT DIRECT LM/4FT | LIGHT INDIRECT LM/4FT | TOTAL LIGHT LM/4FT | ENERGY WATTS/4FT | EFFICACY LPW | CCT  |
|--------------|-------------|---------------------|-----------------------|--------------------|------------------|--------------|------|
| SO           | White       | 382                 | 420                   | 802                | 20               | 40           | 4000 |
| SO           | All         | 883                 | 970                   | 1853               | 40               | 46           | N/A  |



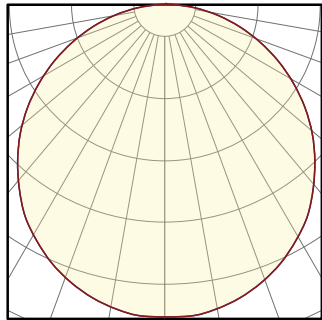
## Linear Series - Rectangle 2

### DIRECT

DIRECT OPTICS: LUMEN OUTPUT (PER 4FT)

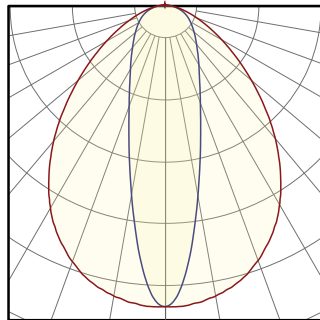
| TYPE          | CCT/CRI         | ENERGY WATTS/4FT | FLOOD LM/4FT | FLOOD LPW | NARROW FLOOD LM/4FT | NARROW FLOOD LPW | AISLE LIGHTER LM/4FT | AISLE LIGHTER LPW | GRAZE LM/4FT | GRAZE LPW | WALL WASH LM/4FT | WALL WASH LPW |
|---------------|-----------------|------------------|--------------|-----------|---------------------|------------------|----------------------|-------------------|--------------|-----------|------------------|---------------|
| STATIC WHITE  | 4000K/80        | SO (32W)         | 3925         | 123       | 4475                | 140              | 4446                 | 139               | 4752         | 149       | 4063             | 127           |
| DYNAMIC WHITE | 4000K/90        | SO (36W)         | 2755         | 77        | 3138                | 87               | 3103                 | 86                | 3312         | 92        | 2824             | 78            |
| WARM DIM      | 2700K/90        | SO (36W)         | 2892         | 80        | 3295                | 92               | 3258                 | 91                | 3478         | 97        | 2965             | 82            |
| RGBW          | ALL CHANNELS UP | SO (20W)         | 883          | 44        | N/A                 | N/A              | N/A                  | N/A               | N/A          | N/A       | N/A              | N/A           |

FLOOD\*



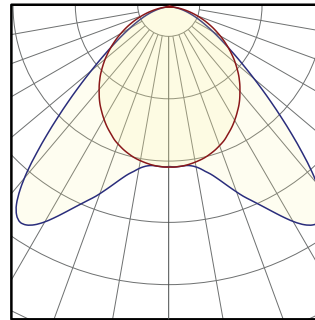
MAX CANDELA: 1336  
DELIVERED LUMENS: 3925  
WATTS: 32  
LPW: 123

NARROW FLOOD\*



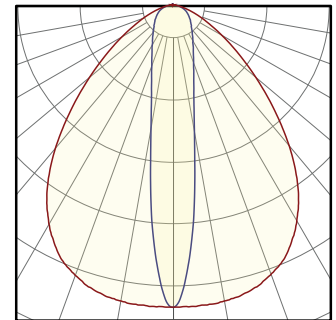
MAX CANDELA: 3831  
DELIVERED LUMENS: 4475  
WATTS: 32  
LPW: 140

AISLE LIGHTER\*



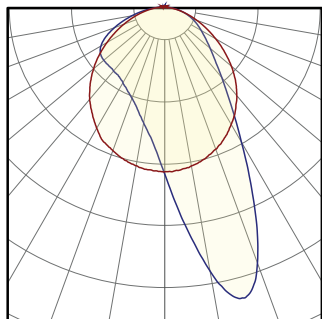
MAX CANDELA: 2061  
DELIVERED LUMENS: 4446  
WATTS: 32  
LPW: 139

WALL GRAZE\*



MAX CANDELA: 5197  
DELIVERED LUMENS: 4752  
WATTS: 32  
LPW: 149

WALL WASH\*



MAX CANDELA: 2973  
DELIVERED LUMENS: 4063  
WATTS: 32  
LPW: 127

### CCT MULTIPLIERS STATIC WHITE

| CCT        | 2700K |      | 3000K |      | 3500K |      | 4000K |      | 5000K |      |
|------------|-------|------|-------|------|-------|------|-------|------|-------|------|
| CRI        | 80    | 90   | 80    | 90   | 80    | 90   | 80    | 90   | 80    | 90   |
| MULTIPLIER | 0.93  | 0.79 | 0.96  | 0.82 | 0.97  | 0.85 | 1     | 0.89 | 1.01  | 0.89 |

### CCT MULTIPLIERS DYNAMIC WHITE

| CCT        | 2700K | 3000K | 3500K | 4000K | 5000K | 6000K |
|------------|-------|-------|-------|-------|-------|-------|
| CRI        | 90    | 90    | 90    | 90    | 90    | 90    |
| MULTIPLIER | 1.09  | 1.08  | 1.03  | 1     | 0.99  | 0.98  |

### CCT MULTIPLIERS WARM DIM

| CCT        | 1800K | 2250K | 2700K |
|------------|-------|-------|-------|
| CRI        | 90    | 90    | 90    |
| MULTIPLIER | 0.02  | 0.17  | 1     |

### POWER LEVEL MULTIPLIERS

| POWER         | VLO  | LO   | SO | HO  | VHO  |
|---------------|------|------|----|-----|------|
| STATIC WHITE  | 0.53 | 0.75 | 1  | 1.2 | 1.45 |
| DYNAMIC WHITE | 0.53 | 0.75 | 1  | 1.2 | 1.45 |
| WARM DIM      | 0.53 | 0.75 | 1  | 1.2 | 1.45 |

\*Fixture Properties: 4ft Nominal Length, Standard Output, Static White 4000K/80CRI



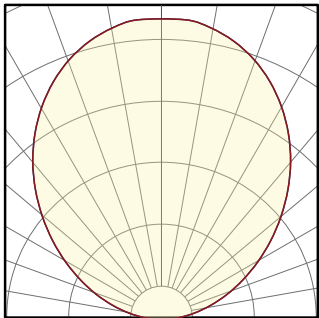
## Linear Series - Rectangle 2

### INDIRECT

INDIRECT OPTICS: LUMEN OUTPUT (PER 4FT)

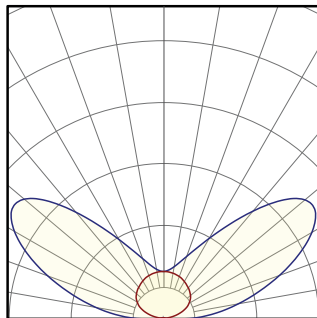
| TYPE          | CCT/CRI         | ENERGY WATTS/4FT | FLOOD LM/4FT | FLOOD LPW | BATWING LM/4FT | BATWING LPW |
|---------------|-----------------|------------------|--------------|-----------|----------------|-------------|
| STATIC WHITE  | 4000K/80        | SO (32W)         | 4311         | 135       | 3933           | 123         |
| DYNAMIC WHITE | 4000K/90        | SO (36W)         | 3025         | 84        | 2764           | 77          |
| WARM DIM      | 2700K/90        | SO (36W)         | 3176         | 88        | 2902           | 81          |
| RGBW          | ALL CHANNELS UP | SO (20W)         | 970          | 49        | N/A            | N/A         |

FLOOD\*



MAX CANDELA: 1677  
DELIVERED LUMENS: 4311  
WATTS: 32  
LPW: 135

BATWING\*



MAX CANDELA: 1722  
DELIVERED LUMENS: 3933  
WATTS: 32  
LPW: 123

LUMINAIRE TOTAL LUMENS PER WATT

$$\frac{(\text{DIRECT LUMENS/FT} + \text{INDIRECT LUMENS/FT}) \times \text{FIXTURE TOTAL LINEAR FT}}{(\text{DIRECT WATTS/FT} + \text{INDIRECT WATTS/FT}) \times \text{FIXTURE TOTAL LINEAR FT}} = \text{TOTAL LUMINAIRE LUMENS PER WATT}$$

\*Fixture Properties: 4ft Nominal Length, Standard Output, Static White 4000K/80CRI

#### CCT MULTIPLIERS STATIC WHITE

| CCT        | 2700K |      | 3000K |      | 3500K |      | 4000K |      | 5000K |      |
|------------|-------|------|-------|------|-------|------|-------|------|-------|------|
| CRI        | 80    | 90   | 80    | 90   | 80    | 90   | 80    | 90   | 80    | 90   |
| MULTIPLIER | 0.93  | 0.79 | 0.96  | 0.82 | 0.97  | 0.85 | 1     | 0.89 | 1.01  | 0.89 |

#### CCT MULTIPLIERS DYNAMIC WHITE

| CCT        | 2700K | 3000K | 3500K | 4000K | 5000K | 6000K |
|------------|-------|-------|-------|-------|-------|-------|
| CRI        | 90    | 90    | 90    | 90    | 90    | 90    |
| MULTIPLIER | 1.09  | 1.08  | 1.03  | 1     | 0.99  | 0.98  |

#### CCT MULTIPLIERS WARM DIM

| CCT        | 1800K | 2250K | 2700K |
|------------|-------|-------|-------|
| CRI        | 90    | 90    | 90    |
| MULTIPLIER | 0.02  | 0.17  | 1     |

#### POWER LEVEL MULTIPLIERS

| POWER         | VLO  | LO   | SO | HO  | VHO  |
|---------------|------|------|----|-----|------|
| STATIC WHITE  | 0.53 | 0.75 | 1  | 1.2 | 1.45 |
| DYNAMIC WHITE | 0.53 | 0.75 | 1  | 1.2 | 1.45 |
| WARM DIM      | 0.53 | 0.75 | 1  | 1.2 | 1.45 |



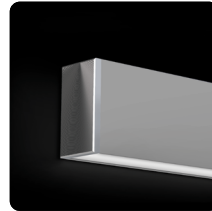
## Linear Series - Rectangle 2

### MOUNTING



#### CABLE SUSPENDED (CS)

This fixture can be a cable suspended down-light and up-light: Bi-Directional (CS), or can be special ordered as a cable suspended static down-light only: Direct Only (CSD). Aircraft cables come in 4ft and 8ft lengths and are field adjustable.



#### SURFACE MOUNT SIDE (SMS)

Surface Mount Side (SMS). The fixture is mounted on the wall using mounting brackets, giving a static bi-directional up-light and down-light.

### CONTINUOUS RUN (CR)

Our single seam continuous run option offers smooth transitions from one section to the next. Our joiner bracket and alignment pin system offers easy to use, confident, single seam connections with a tight fit.



CONTINUOUS RUN SINGLE SEAM



FIXTURE WITH SINGLE SEAM CONTINUOUS RUN

### CANOPIES

SATIN WHITE (SW)

MATTE BLACK

MACHINE FINISH (MF)



44



4" diameter power feed and 4" diameter non-power feed canopy.

40



4" diameter machined power feed canopy and no canopy on the non-power feed side. Minimal aesthetic. Requires a 1/4-20 stud securely attached to the ceiling.

41



4" diameter machined power feed and 1-1/4" diameter machined non-power feed canopy. Offers minimal ceiling treatment while maintaining the ability to cover mistakes. Requires a 1/4-20 stud securely fastened to the ceiling.

#### 44E, 41E, 40E (\*\*E) International Canopy



INTL POWERFEED CANOPY FOR INTEGRAL DRIVER FIXTURES





This powerfeed canopy replaces the flat style canopy from the North American mounting style (44, 41, & 40) versions pictured)



## Linear Series - Rectangle 2

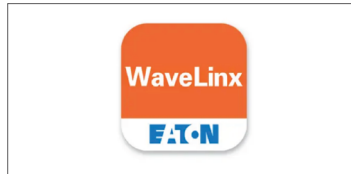
### COLOR AND FINISH

Standard luminaire housing finishes are Satin Clear anodized, Matte Black powder coat, and Satin White powder coat. Standard hardware (end caps, knuckles, cover plates, etc.) finishes are Machined Finish, Matte Black powder coat, & Satin White powder coat. Custom anodizing and powder coated finishes are available as well. If you have a particular color/finish treatment in mind, please contact the factory and we will do our best to accommodate your project needs.

| STANDARD  |   |   | CUSTOM  |   |   |   |
|---|---|---|---|---|---|---|
| <b>LUMINAIRE</b>  |   |   |   |   |   |   |
|  |  |  |  |  |  |  |
| SATIN CLEAR ANODIZING   | RAL 9005<br>MATTE BLACK   | RAL 9003<br>SATIN WHITE   | BRONZE  | COLOR ANODIZE   | SPECULAR  | RAL COLORS  |
| <b>HARDWARE</b>   |   |   |   |   |   |   |
|  |  |  |   |   |   |   |
| MACHINED COMPONENTS   | RAL 9005<br>MATTE BLACK   | RAL 9003<br>SATIN WHITE   |   |   |   |   |

### SENSORS

Optional fixture integrated sensors and controls offer wireless control system compatibility directly from the factory. Tempo luminaries are now available with integrated control gear from 4 major partners.



## Linear Series - Rectangle 2

### WELDED CORNERS

- Luminaire housing is custom mitered & welded for a clean corner appearance
- Lens is also mitered for lens-to-lens interfaces that mirror the mitered housing
- Lens is illuminated to the corner (AKA: lit corners)
- Adjustable aircraft cable suspension system
- High quality powder coated finish (anodized finishes not available with welded custom patterns).

### CUSTOMER INSTRUCTIONS

A. Select "CP" option in the ordering block (found in the NOMINAL LENGTH column)

B. Submit simple drawing(s) with the following info:

- Provide number of legs of pattern
- Length of each leg (A, B, C, D, etc)
- Angles of corners (a1, b1, c1, d1, etc)

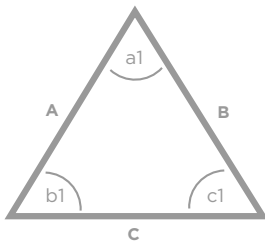
1. For '3 dimensional' patterns, please provide side view(s) with desired angles, in addition to a top view.

2. Minimum corner angle is 30 degrees.



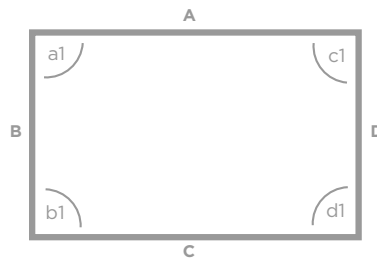
CUSTOM PATTERN PICTURED

### EXAMPLES:



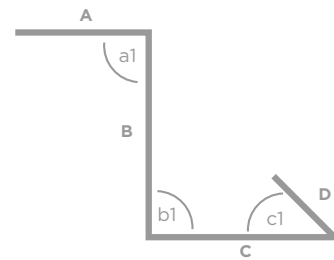
#### Customer Specification

1. Qty Legs = 3
2. A, B, C = 3ft
3. a1, b1, c1 = 60 deg



#### Customer Specification

1. Qty Legs = 4
2. A & C = 8ft, B & D = 4ft
3. a1, b1, c1, d1 = 90 deg



#### Customer Specification

1. Qty Legs = 4
2. A = 8ft, B = 6ft, C = 6ft, D = 4ft-3in
3. a1 & b1 = 90 deg, c1 = 45 deg

