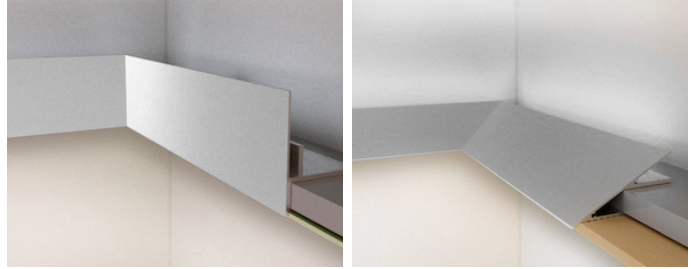


Aluminum Cove System

INSTALLATION INSTRUCTIONS

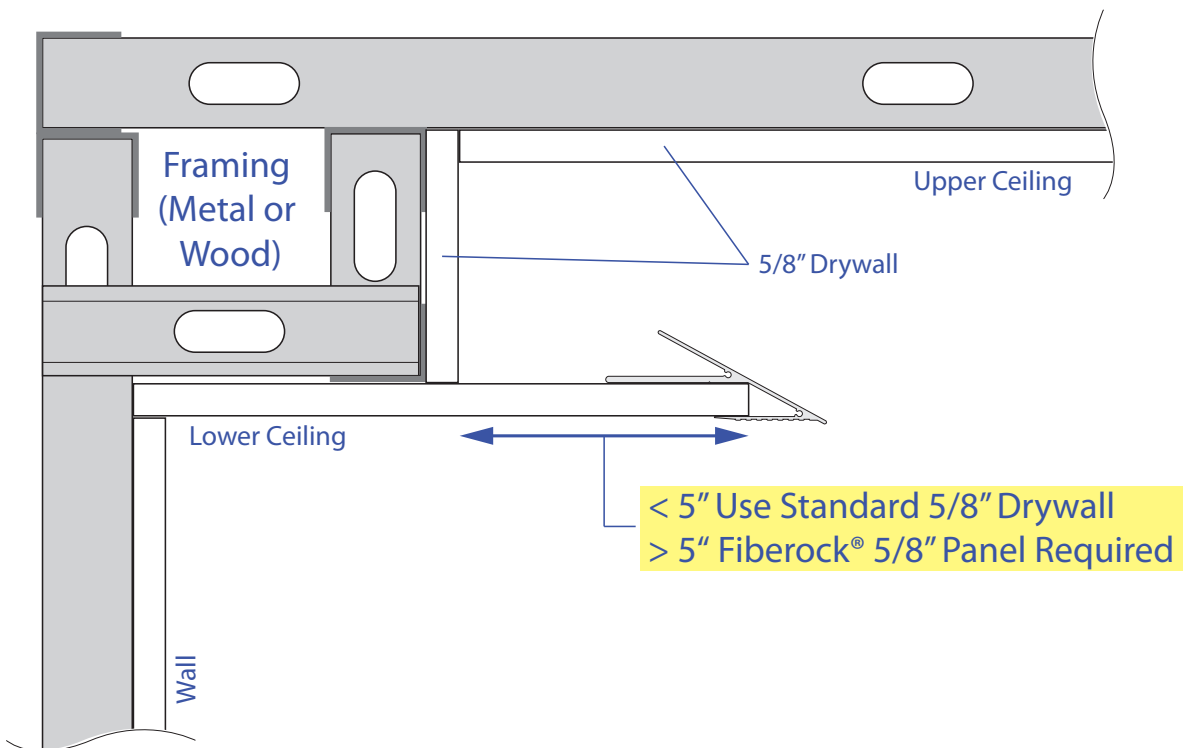


Important Notes and Construction Example	Page 1
Cove Installation	Page 2
Square Edge Joint Assembly Instructions	Page 3
Square Edge Corner Assembly Instructions	Page 4
Knife Edge Joint & Corner Assembly Instructions	Page 5

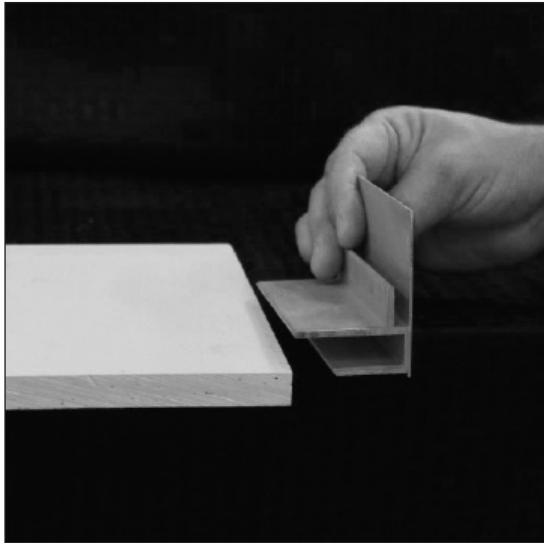
IMPORTANT NOTES:

- 1) Aluminum Cove mounts onto 5/8" drywall. If exceeded drywall extends beyond 5 inches, as noted in construction example below, it is required to use Fiberock[®] to support weight of cove and lighting fixtures.
- 2) Pre-fabricated corners are recommended to install first then cut straight cove sections to fit.

CONSTRUCTION EXAMPLE:

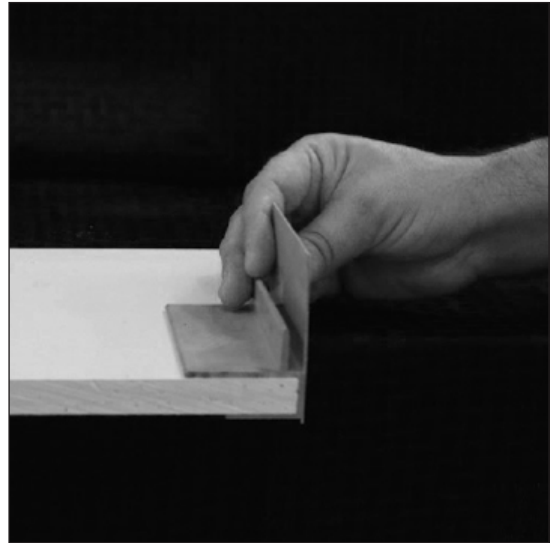


ALUMINUM COVE INSTALLATION INSTRUCTIONS



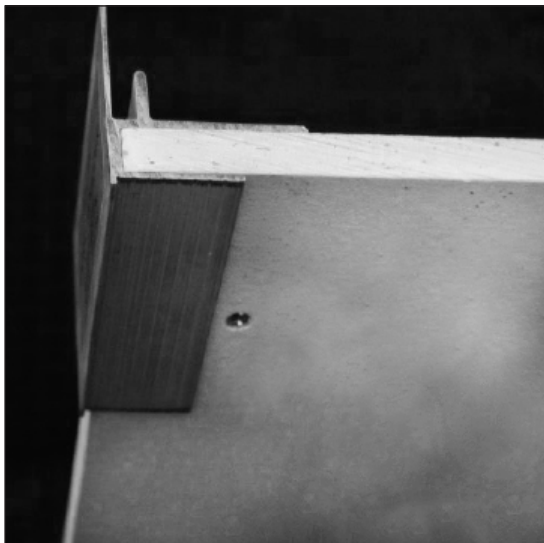
STEP 1

Align light cove drywall cavity to drywall.



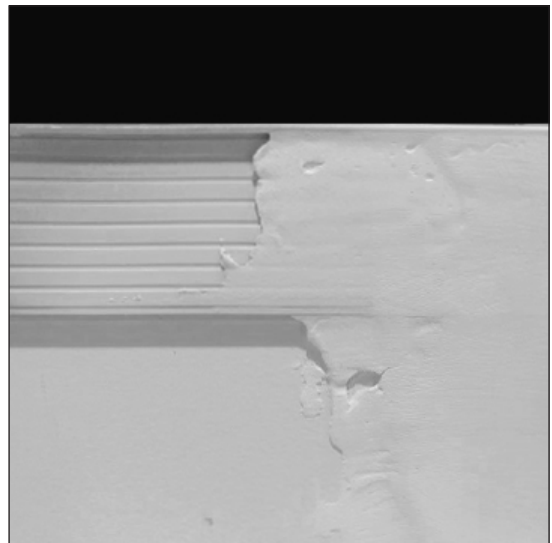
STEP 2

Slide light cove onto drywall. Make sure edge of drywall seats completely into cove drywall cavity.



STEP 3

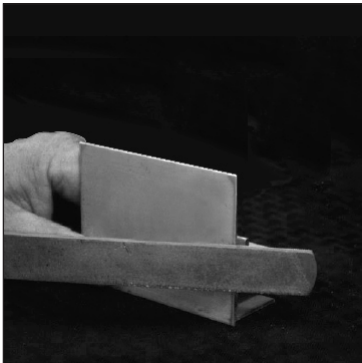
Fasten light cove to drywall with supplied 1 inch self-tapping screws every 12 to 18 inches.



STEP 4

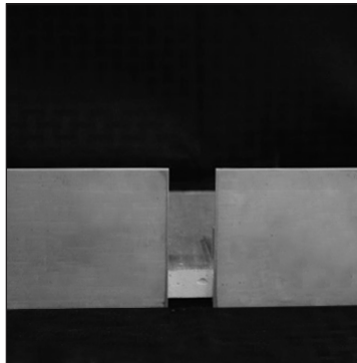
Mud and finish as required.
Aluminum cove is primer ready.

ALUMINUM COVE INSTALLATION INSTRUCTIONS - SQUARE EDGE JOINT ASSEMBLY



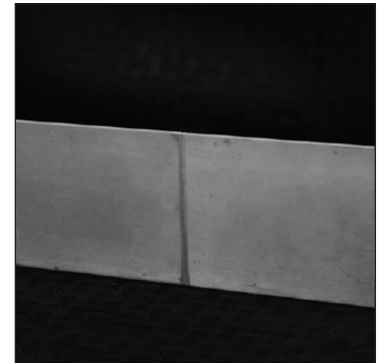
STEP 1

Use metal file to bevel edges that will be joined.



STEP 2

Insert cove onto drywall as shown in steps 1 & 2 of cove installation instructions.



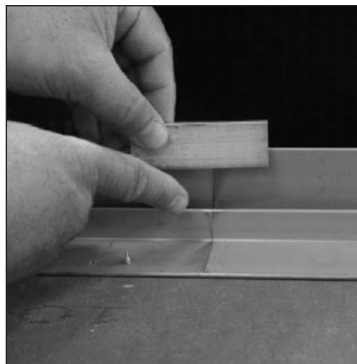
STEP 3

Align light cove together tightly.



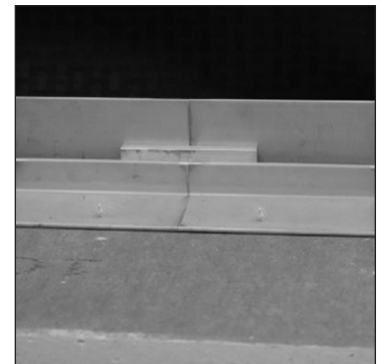
STEP 4

Apply construction adhesive (P/N ACA-ADH) onto supplied aluminum cove splice key. (Loctite Power Grab Ultimate)



STEP 5

Insert splice key and set.



STEP 6

Fasten light cove onto drywall with supplied 1 inch self-tapping screws every 12 to 18 inches. (See Step 3 of cove installation Instructions on page 2.)



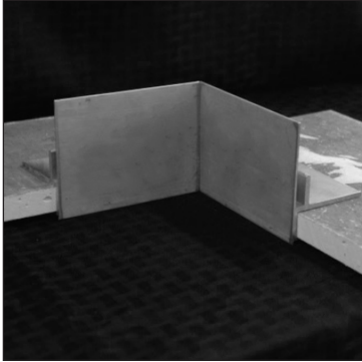
STEP 7

Apply sandable epoxy (P/N ACA-SCF) to face of joint, let set and sand flush. Mud & finish bottom of light cove as required then primer and paint. (Loctite Metal/Concrete Epoxy)

ALUMINUM COVE INSTALLATION INSTRUCTIONS - SQUARE EDGE CORNER ASSEMBLY

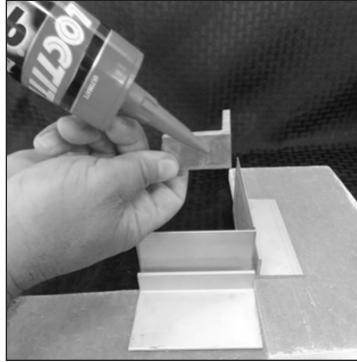
IMPORTANT:

Pre-fabricated corners are recommended to install first then cut straight cove sections to fit.



STEP 1

Align corner to drywall and slide light cove onto drywall. Make sure edge of drywall seats completely into cove drywall cavity..



STEP 2

Apply construction adhesive (P/N ACA-ADH) onto supplied aluminum corner cove splice key. (Loctite Power Grab Ultimate)



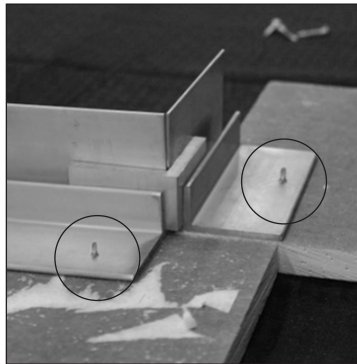
STEP 3

Insert splice key into corner channel.



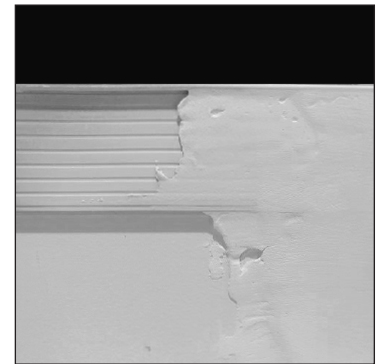
STEP 4

Let corner key set.



STEP 5

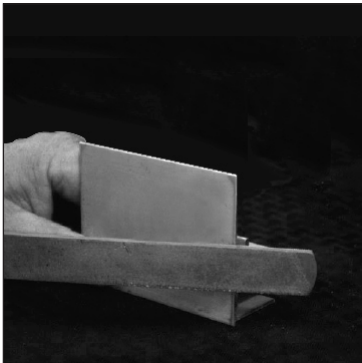
Fasten light cove onto drywall with supplied 1 inch self-tapping screws.
(See Step 3 of Cove Installation Instructions on page 2.)



STEP 6

Proceed to installing straight cove sections and join together with corners as shown in "Joint Assembly Instructions" on page 3.
Mud and finish as required.

ALUMINUM COVE INSTALLATION INSTRUCTIONS - KNIFE EDGE JOINT ASSEMBLY



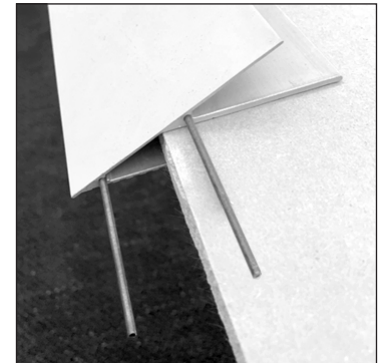
STEP 1

Use metal file to bevel edges that will be joined.



STEP 2

Insert cove onto drywall as shown in steps 1 & 2 of cove installation instructions.



STEP 3

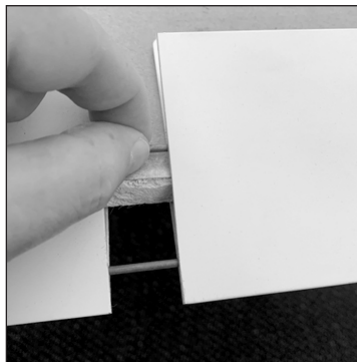
Insert two Cove Splice Pins into alignment holes as shown.



STEP 4

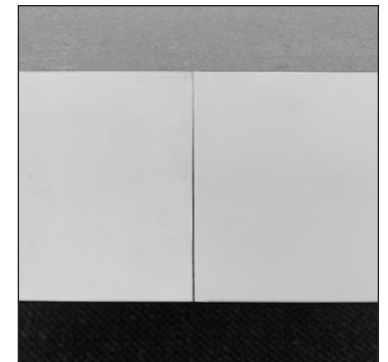
Slide alignment pins into extrusion leaving pins about 1" protruding.

Insert second cove section onto drywall as shown.



STEP 5

Push alignment pins about 2" into second cove section.



STEP 6

Slide second cove section flush to first section & fasten to drywall with supplied 1 inch self-tapping screws every 12 to 18 inches.

(See Step 3 of cove installation Instructions on page 2.)



STEP 7

Apply sandable epoxy (P/N ACA-SCF) to face of joint, let set and sand flush. Mud & finish bottom of light cove as required then primer and paint.

(Loctite Metal/Concrete Epoxy)

KNIFE EDGE CORNER ASSEMBLY:

Same method as Joint assembly shown above. Use two Cove Splice Pins on each end of corner to align with the straight Knife Edge cove.