

CLiP 5

LED LINEAR COVE LIGHTING, MID-POWER
120V OR 277V INTEGRAL POWER SYSTEM



INSTALLATION INSTRUCTIONS

Ratings, Hardware and Warning.....	Page 1
Set Up Options	Page 2
Installation Instructions	Page 3-5

IMPORTANT:

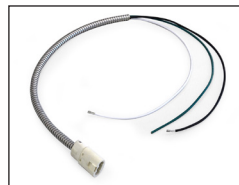
Before installing the CLiP 5 (C5C) be sure to install Tempo Surge Suppression Device (SSD-120) to every branch circuit to validate warranty. The product is CSA certified under standard CSA C22.2 No. 250.0 and UL Standard 2108.

ELECTRICAL RATINGS

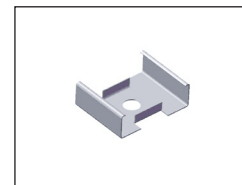
CLiP 5 Products operate at 120VAC or 277VAC

REQUIRED HARDWARE

- 1) Power Feed Cable (PFC6-F-36)
- 2) Mounting Bracket (C4A-MTGBRKT)



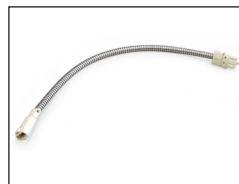
PFC6-F-36



C4A-MTGBRKT

OPTIONAL HARDWARE

- 1) Joiner Feed Cable (JFC6-MF-xx)
- 3) 10°/20° Mounting Bracket (C4A-MTGBRKT-1020)
- 4) +/-90° Adjustable Mounting Bracket (PA-5)



JFC6-MF-xx



C4A-MTGBRKT-1020



PA-5

NOTE: For maximum CLiP 5 run lengths, please refer to Specification Sheet.



WARNING:

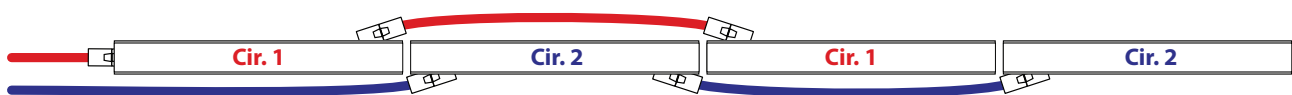
Read and understand these instructions before installing. This product must be installed in accordance with the applicable installation code by a person familiar with the construction and operation of the product and the hazards involved. Turn off main power supply before you start installing CLiP 5.

CLiP 5

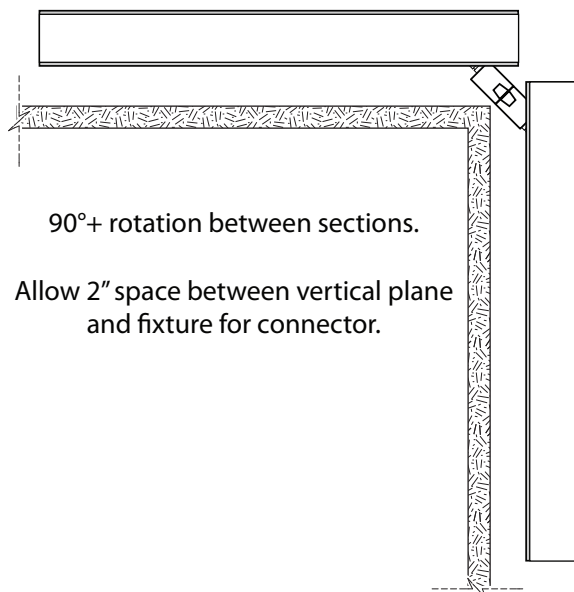
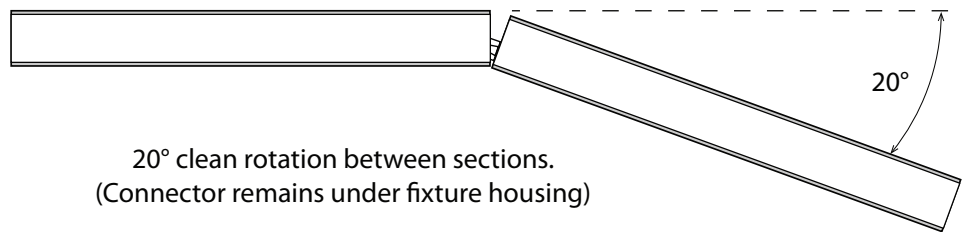
LED LINEAR COVE LIGHTING, MID-POWER
120V OR 277V INTEGRAL POWER SYSTEM

SET UP OPTIONS

Double circuit functionality within a single continuous run allowing for one circuit to be connected to emergency backup power supply.



Requires 1 foot Jumper Feed Cables
(JFC6-FM-12)



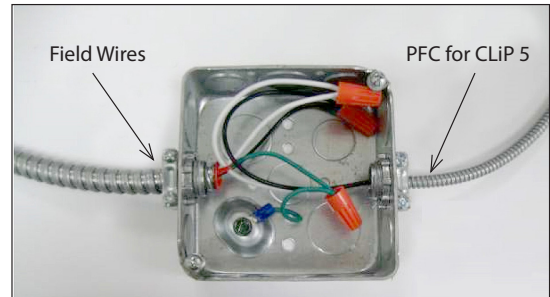
CLiP 5

LED LINEAR COVE LIGHTING, MID-POWER
120V OR 277V INTEGRAL POWER SYSTEM

INSTALLATION

IMPORTANT:

To achieve proper fixture ground, supplied Power Feed Cable (PFC) assembly must be used and attached to grounded J-Box. When connecting field wires to PFC wires observe polarity; i.e., White to Neutral, Black to Line and Green to ground.



STEP 1

Connecting power to the CLiP 5:

Connect the female connector on the PFC to the male connector on the CLiP 5 by pressing together until clip on connector engages, **Figure 1 & 2.**



Figure 1



Figure 2

STEP 2

Connecting fixture to fixture:

CLiP 5 sections can be joined together by connecting the male connector into the female connector same as power feed in Step 1, **Figure 3 & 4.**



Figure 3



Figure 4

You can also join sections by using the optional Jumper Feed Cables (JFC6-MF-xx), **Figure 5.**

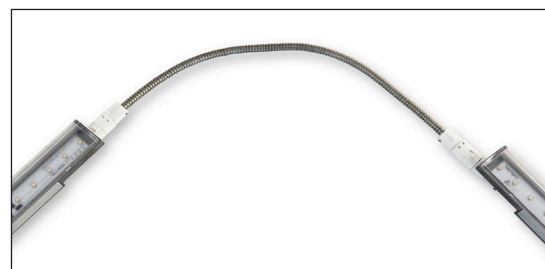


Figure 5

CLiP 5

LED LINEAR COVE LIGHTING, MID-POWER
120V OR 277V INTEGRAL POWER SYSTEM

INSTALLATION (continued)

IMPORTANT: Mounting Hardware is required to allow room for connectors under fixtures.

STEP 3A

Install CLiP 5 using flat mounting bracket: C4A-MTGBRKT

Place mounting bracket on surface in desired location and secure using flat heat screws (not supplied), **Figure 6**.



Figure 6

Place CLiP 5 on the mounting bracket securing one side of fixture track hook under the bracket lip, **Figure 7**. Once first hook is engaged, carefully push down the fixture onto the bracket to engage the opposite side, **Figure 8**.

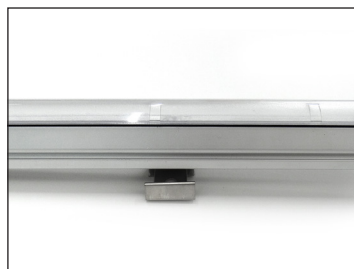


Figure 7



Figure 8

CLiP 5

LED LINEAR COVE LIGHTING, MID-POWER
120V OR 277V INTEGRAL POWER SYSTEM

INSTALLATION (continued)

STEP 3B

Installing CLiP 5 using optional 10°/20° mounting bracket: C4A-MTGBRKT-1020

Orient mounting bracket on 10° side or 20° side based on the application. Secure using flat heat screws (not supplied), **Figure 9**.



Figure 9

Install CLiP 5 on the mounting bracket by placing fixture over the bracket and pushing it into the bracket until bracket hooks engage the lip on edge of fixture, **Figure 10 & 11**.



Figure 10



Figure 11

STEP 3C

Installing CLiP 5 using optional Adjustable Mounting Bracket: PA-5

Place mounting bracket on surface in desired location and secure using flat heat screws (not supplied), **Figure 12**.



Figure 12



Figure 13

Install CLiP 5 on the mounting bracket by placing fixture over the mounting clip and carefully but firmly pushing it into the bracket until bracket hooks engage the lip on edge of fixture, **Figure 13 & 14**.



Figure 14



Figure 15

Adjust fixture to desired angle and tighten using Phillips Screwdriver, **Figure 15**.