

CLiP 4

- LED LINEAR ACCENT/COVE LIGHTING
- 24V REMOTE POWER SYSTEM



INSTALLATION INSTRUCTIONS

Ratings, Hardware and Warning.....	Page 1
Fixture Connection Instructions.....	Page 2
Fixture Installation Instructions.....	Page 3



WARNING:

Read and understand these instructions before installing. This product must be installed in accordance with the applicable installation code by a person familiar with the construction and operation of the product and the hazards involved.

Turn off main power supply before you start installing.

ELECTRICAL RATINGS

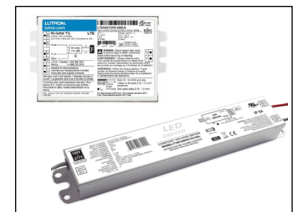
Powered by remote low voltage 24VDC system.

HARDWARE PROVIDED

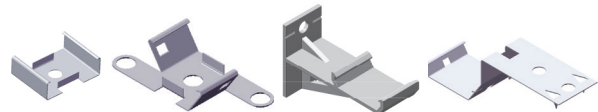
- (a) Power Feed Cable (PFC4C-F-24-36)
- (b) Power Supply (Order Separately)
- (c) Mounting Brackets (Order Separately)



a) Power Feed



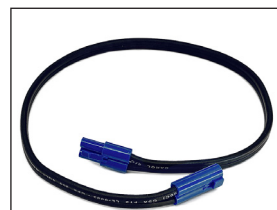
b) Power Supply



c) Mounting Clips & Brackets

OPTIONAL HARDWARE

- (d) Jumper Feed Cable (JFC4C-MF-24-xx)



d) Jumper Feed

CLiP 3 DYNAMIC INSTALLATION INSTRUCTIONS

CONNECT SECTIONS TOGETHER

STEP 1

Connect Sections Together:

Layout fixture sections in the area where they will be installed. Turn fixtures on side and butt up end to end, **Figure 1**. Press connectors together until male side is completely flush with female side and clip on top of connectors is completely secure, **Figure 2**.

Test by gently trying to pull connectors apart to be make sure they are set.

Repeat for each section in run.

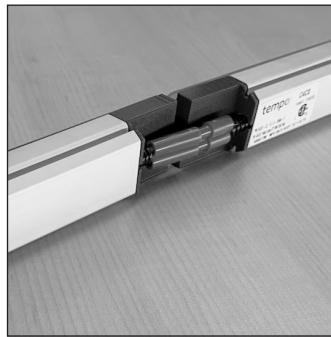


Figure 1



Figure 2

STEP 2

Connecting Power Feed:

As described above, connect the Power Feed to first section of run by pressing connectors together, **Figure 3**, until male side is completely flush with female side and clip on top of connectors is completely secure, **Figure 4**.



Figure 3

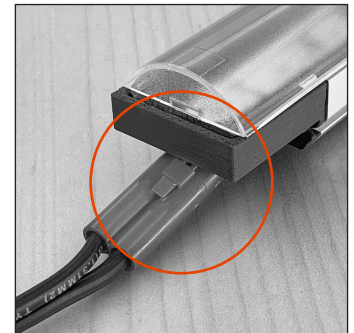


Figure 4

STEP 3

Jumper Feed Cables (Optional):

In areas where a space between sections is required or around corners use Jumper Feed Cable and connect using same method used to connect power feed in Step 2. **Figure 5**



Figure 5

CLIP 3 DYNAMIC INSTALLATION INSTRUCTIONS

INSTALLING

STEP 4

Installing optional mounting clips:

Mark a line on surface where the edge of fixture runs will be. Place mounting brackets on edge of marked line and secure with screws provided,

Figure 5.

Use same method for other mounting clip & bracket styles.

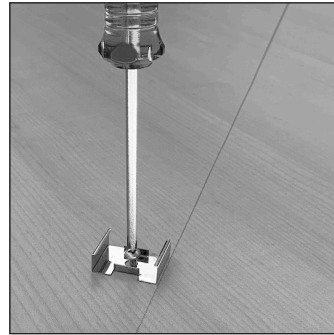


Figure 5

STEP 5

Install fixtures on the mounting brackets by inserting one edge into clip, **Figure 2**, then press down on opposite side, snapping fixture into bracket, **Figure 3**.

IMPORTANT: Make sure each side of fixture base is completely snapped into bracket, **Figure 4**.



Figure 6



Figure 7

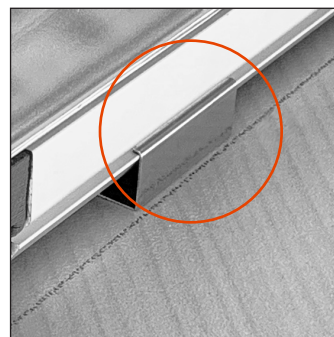


Figure 8

STEP 6

Connect power feed to supplied 24V LED Driver per instructions on driver label.

Note: No polarity in 24V fixture wiring