

## C5R

RIGID LED LINEAR COVE LIGHTING, MID-POWER  
INTEGRAL POWER SYSTEM



## INSTALLATION INSTRUCTIONS

---

Ratings, Hardware and Warning.....	Page 1
Installation Instructions.....	Page 2-4

---

### IMPORTANT:

Before installing the C5R be sure to install Tempo Surge Suppression Device (SSD-120) to every branch circuit to validate warranty. The product is CSA certified under standard CSA C22.2 No. 250.0 and UL Standard 2108.

### ELECTRICAL RATINGS

C5R Products operate at 120VAC or 277VAC



PFC

### REQUIRED HARDWARE

- 1) Power Feed Cable (PFC5-F-UNV-36)



JFC



C4A-MTGBRKT

### OPTIONAL HARDWARE

- 1) Joiner Feed Cable (JFC5-MF-UNV-12)
- 2) Mounting Clips, screws provided (C4A-MTGBRKT)
- 3) 10°/20° Mounting Clips (C4A-MTGBRKT-1020)
- 4) +/-90° Adjustable Mounting Bracket (PA-5)



C4A-MTGBRKT-1020



PA-5

NOTE: For maximum C5R lengths, please refer to Specification Sheet



### WARNING:

Read and understand these instructions before installing. This product must be installed in accordance with the applicable installation code by a person familiar with the construction and operation of the product and the hazards involved. Turn off main power supply before you start installing C5R.

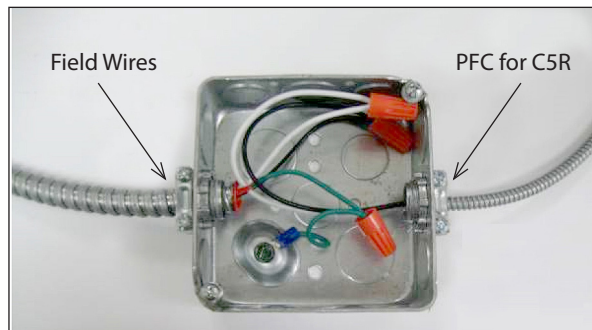
## C5R

RIGID LED LINEAR COVE LIGHTING, MID-POWER  
INTEGRAL POWER SYSTEM

## INSTALLATION

### IMPORTANT:

To achieve proper fixture ground, supplied Tempo Power Feed Cable (PFC) assembly must be used and attached to grounded J-Box. When connecting field wires to PFC wires observe polarity; i.e., White to Neutral, Black to Line and Green to ground.



### STEP 1

#### Connecting power to the C5R:

Connect the female connector on the PFC to the male connector on the C5R, **Figure 1**. Tighten screw on the topside with Phillips Screwdriver, **Figure 2**.

Note: When connecting female to male connector insure that the guide tab is inserted correctly into the guide hole for proper connection, **Figure 3**.



Figure 1



Figure 2

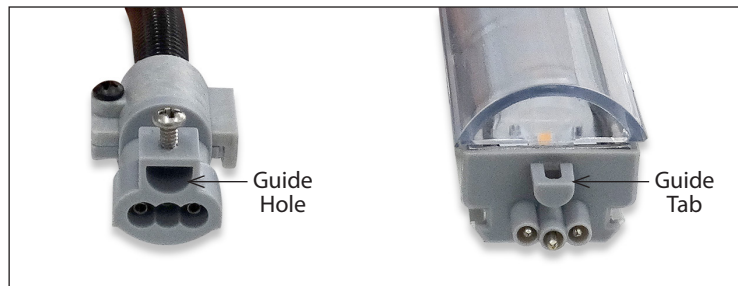


Figure 3

## C5R

RIGID LED LINEAR COVE LIGHTING, MID-POWER  
INTEGRAL POWER SYSTEM

### INSTALLATION (continued)

#### STEP 2

##### Connecting fixture to fixture:

The C5R can be joined to other C5 family products by inserting the male connector into the female connector on the next fixture, **Figure 3** and **Figure 4**. Tighten the screw with a Philips Screwdriver, **Figure 5**. You can also join fixture to fixture by using the optional JFC, **Figure 6**.



Figure 3



Figure 4

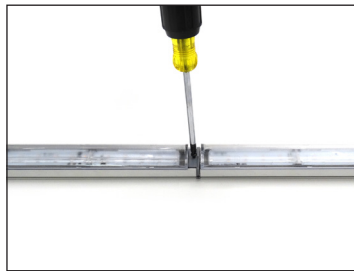


Figure 5

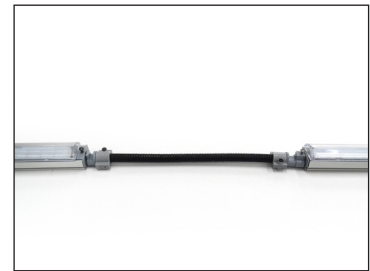


Figure 6

#### STEP 3A

##### Install C5R using optional flat mounting clip: C4A-MTGBRKT:

Place mounting clip on surface and secure using wall-dog screws (provided), **Figure 7**. Place C5R on the mounting clip securing one side of fixture track hook under the mounting clip lip, **Figure 8**. Once first hook is engaged, carefully push down the fixture onto the clip to engage the opposite side, **Figure 9**.

Note: When installing a fixture with the Asymmetric Optic confirm that the label stating "Wall Side" is facing away from desired beam angle that would be pointing towards lighting target.



Figure 7



Figure 8

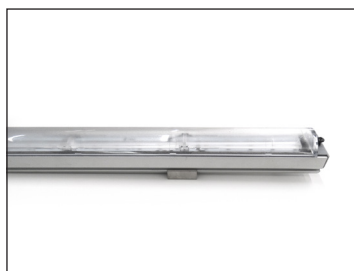


Figure 9

## C5R

RIGID LED LINEAR COVE LIGHTING, MID-POWER  
INTEGRAL POWER SYSTEM

### INSTALLATION (continued)

#### STEP 3B

##### Installing C5R using optional 10°/20° mounting clip:

###### C4A-MTGBRKT-1020

Orient mounting clip on 10° side or 20° side based on the application. Secure using wall-dog screws provided, **Figure 10**. Install C5R on the mounting clip by placing fixture over the mounting clip and push it onto the track until the hooks on the clip engage the lip on the fixture, **Figure 11 & Figure 12**.

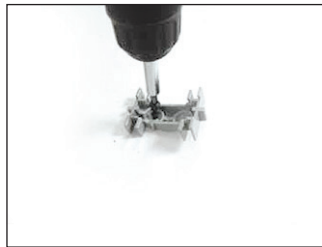


Figure 10



Figure 11



Figure 12

#### STEP 3B

##### Installing C5R using optional adjustable mounting clip:

###### PA-5

Secure pivot arm assembly to mounting surface using wall-dog screws provided, **Figure 13**. Install C5R on the mounting clip by placing fixture over the mounting clip and pushing it onto the track until the hooks on the clip engage the lip on the fixture, **Figure 14 & Figure 15**. Adjust fixture to desired angle and tighten using Philips Screwdriver, **Figure 16**.



Figure 13



Figure 14



Figure 15



Figure 16