

## C6R

RIGID LED COVE LINEAR LIGHTING, HIGH LUMEN  
INTEGRAL POWER SYSTEM



## INSTALLATION INSTRUCTIONS

---

Ratings, Hardware and Warning.....	Page 1
Installation Instructions.....	Page 2-4

---

### IMPORTANT:

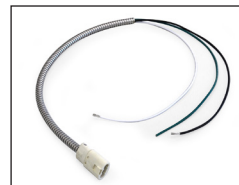
Before installing the C6R be sure to install Tempo Surge Suppression Device (SSD-120/SSD-277) to every branch circuit to validate warranty. The product is CSA certified under standard CSA C22.2 No. 250.0 and UL Standard 2108.

### ELECTRICAL RATINGS

C6R Products operate at 120VAC or Universal 120-277VAC depending on model. Reference label on fixtures for details.

### REQUIRED HARDWARE

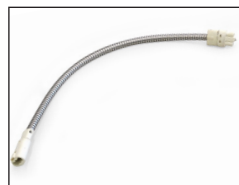
- 1) Power Feed Cable (PFC)



PFC

### OPTIONAL HARDWARE

- 1) Joiner Feed Cable (JFC)
- 2) Mounting Clips, screws provided (C6A-MC)
- 3) 10°/20° Mounting Clips (C6A-MTGBRKT-1020)
- 4) +/-90° Adjustable Mounting Bracket (PA-8)



JFC



C6A-MC



C6A-MTGBRKT-1020



PA-8

NOTE: For maximum C6R lengths, please refer to Specification Sheet



### WARNING:

Read and understand these instructions before installing. This product must be installed in accordance with the applicable installation code by a person familiar with the construction and operation of the product and the hazards involved. Turn off main power supply before you start installing C6R.

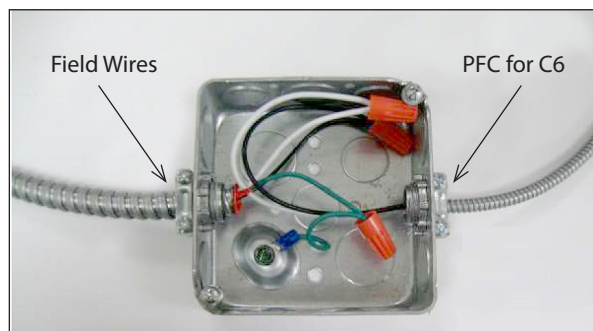
## C6R

RIGID LED COVE LINEAR LIGHTING, HIGH LUMEN  
INTEGRAL POWER SYSTEM

## INSTALLATION

### IMPORTANT:

To achieve proper fixture ground, supplied Tempo Power Feed Cable (PFC) assembly must be used and attached to grounded J-Box. When connecting field wires to PFC wires observe polarity; i.e., White to Neutral, Black to Line and Green to ground.



### STEP 1

#### Connecting power to the C6R:

Connect the female connector on the PFC to the male connector on C6R by lining up the locking tab and pressing together firmly until tab locks into place, **Figure 1 & 2**.

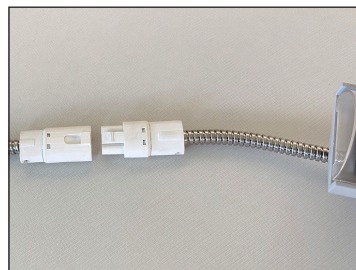


Figure 1

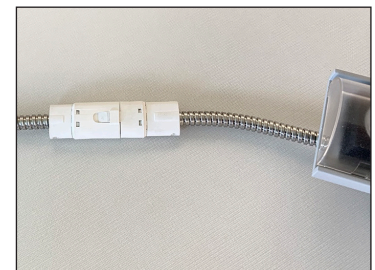


Figure 2

## C6R

RIGID LED COVE LINEAR LIGHTING, HIGH LUMEN  
INTEGRAL POWER SYSTEM

### INSTALLATION (continued)

#### STEP 2

##### Connecting fixture to fixture:

The C6R sections can be joined together for longer runs. Make connections same as power feed connections shown in Step 1, **Figure 3**.

For end to end connections push sections together, **Figure 4**.

C6R leads allow for sections to go around corners without the need for a jumper cable, **Figure 5**.

For applications requiring longer space in-between sections use Jumper Feed Cable (JFC), **Figure 6**.

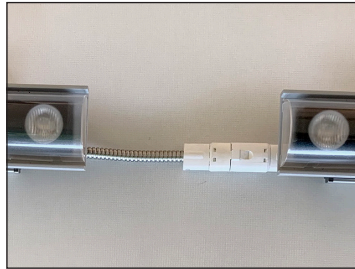


Figure 3

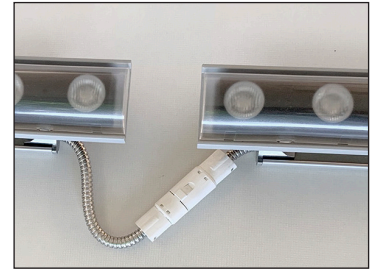


Figure 4

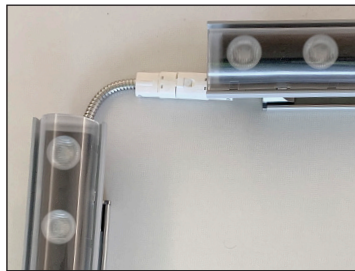


Figure 5



Figure 6

#### STEP 3A

##### Install C6R using flat mounting clip: C6A-MC:

Place mounting clip on surface and secure using wall-dog screws (provided), **Figure 7**.

Place C6R on the mounting clip placing on side of the fixture track hook under the mounting clip lip, **Figure 8**. Once first hook is engaged, carefully push down the fixture onto the clip to engage the opposite side, **Figure 9**.

Note: When installing a fixture with the Asymmetric Optic confirm that the label stating "Wall Side" is facing away from desired beam angle that would be pointing towards lighting target.

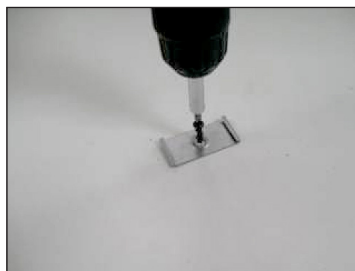


Figure 7



Figure 8



Figure 9

## C6R

RIGID LED COVE LINEAR LIGHTING, HIGH LUMEN  
INTEGRAL POWER SYSTEM

### INSTALLATION (continued)

#### STEP 3B

**Installing C6R using optional 10°/20°  
mounting clip:**

##### **C6A-MTGBRKT-1020**

Orient mounting clip on 10° side or 20° side based on the application. Secure using wall-dog screws provided, **Figure 10**. Install C6R on the mounting clip by placing fixture over the mounting clip and push it onto the track until the hooks on the clip engage the lip on the fixture, **Figure 11 & Figure 12**.

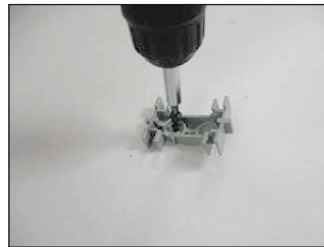


Figure 10

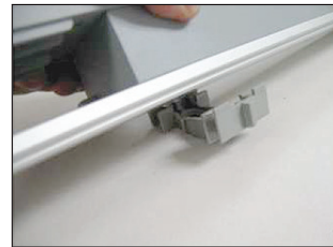


Figure 11



Figure 12

#### STEP 3C

**Installing C6R using optional adjustable  
mounting clip:**

##### **PA-8**

Secure pivot arm assembly to mounting surface using wall-dog screws provided, **Figure 13**. Install C6R on the mounting clip by placing fixture over the mounting clip and pushing it onto the track until the hooks on the clip engage the lip on the fixture, **Figure 14 & Figure 15**. Adjust fixture to desired angle and tighten using Philips Screwdriver, **Figure 16**.



Figure 13



Figure 14



Figure 15



Figure 16