

## C3R

RIGID LED LINEAR ACCENT LIGHTING, LOW-POWER  
REMOTE POWER SYSTEM



### APPLICATION

C3R LED linear lighting produces uniform illumination designed to accent and highlight spaces such as small coves, under cabinets or millwork. Designed with modular CLiP<sup>®</sup> (Configurable Lighting Platform), C3R provides options to suit multiple application requirements. The rigid C3R may be connected to Tempo's serpentine C3S providing an elegant solution for combined curved and straight-run applications. DMX, 0-10V & Triac dimming options.

### CONSTRUCTION

- Designed with non-ferrous components and mounting brackets. Meets MRI room requirements when used with brass mounting screws (part number C3A-MNTSCREW-BRS).
- Section lengths up to 6 feet. Join sections and create continuous runs from one power supply.
- For combined curved and straight-run sections, C3R may be easily connected to Tempo's C3S linear serpentine system
- Easily replaceable LED printed circuit boards.
- Quick wire connectors to join sections.
- CSA damp location listed.

### OPTICS / LENS / DIFFUSER

- Standard clear convex lens
- Optional frosted convex lens
- Optional half round frosted dome lens

### POWER SYSTEM

- Utilizes remote, Class II low voltage 12Volt or 24Volt Power Supply. Power supplies must be installed in an approved enclosure (by others) in close proximity to luminaire. See Driver Remote Distance Chart for guidance.
- Triac dimming to 1%  
0-10V dimming to under 10%  
DMX/RDM dimming to 1%  
Non-dimming also available

### Micro-Maintainable

Components, such as LED boards and lenses, can be easily replaced if necessary for increased product sustainability.

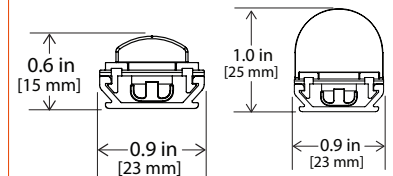


### PERFORMANCE

- CLiP<sup>™</sup> - Configurable Lighting Platform module spacing options of 1", 2", 3", 4" & 5" for specific applications or to reduce total watts per foot.
- Light output ranges from 220 to 320 lm/ft based on Watts/ft selection
- Dense Pack (DP) LED spacing (3W/ft only) places more LED's closer together in each 3" module for high uniformity illumination.
- Operating temperature range of -20°C to 50°C
- Power Supply Total Harmonic Distortion <20%, Power Factor >0.9

### LIGHT CHARACTERISTICS

- Available in 1600K, 2000K, 2200K, 2700K, 3000K, 3500K, 4000K, 5000K plus Red, Green, Blue and Amber
- Typical CRI of 80+, 90+ CRI option available with 2700K, 3000K and 3500K selection (JA8).
- All LED's are selected and placed on the printed circuit boards via Tempo Industries' UniBin<sup>™</sup> process which ensures consistent hue and color within the entire run. Color variations are held to within a maximum of a 2-step MacAdam ellipse.



Buy Tempo  
Buy American



OF US AND IMPORTED COMPONENTS

### WARRANTY

Tempo provides a 5-year limited warranty.

86,000 HOURS

L85 LUMEN MAINTENANCE  
LED Luminaires will reach 85% of initial lumen output at or beyond 86,000 hours at 25°C.



High CRI 90+ Options



## C3R

RIGID LED LINEAR ACCENT LIGHTING, LOW-POWER  
REMOTE POWER SYSTEM

### MAXIMUM RUN LENGTHS 12V MODEL

12V Driver	Module Spacing*	Watts/ft	Max Distance
60W	<b>0" (Standard)</b>	<b>2.0</b>	<b>30ft</b>
	1"	1.5	40ft
	2"	1.2	50ft
	3"	1.0	60ft
40W	<b>0" (Standard)</b>	<b>2.0</b>	<b>20ft</b>
	1"	1.5	24ft
	2"	1.2	30ft
	3"	1.0	40ft

\* See page six for details on extended module spacing.

### MAXIMUM RUN LENGTHS 24V MODEL

24V Driver	Module Spacing*	Watts/ft	Max Distance
100W	<b>0" (Standard)</b>	<b>3.0</b>	<b>30ft</b>
	1"	2.2	40ft
	2"	1.8	55ft
	3"	1.5	65ft
60W	<b>0" (Standard)</b>	<b>3.0</b>	<b>18ft</b>
	1"	2.2	24ft
	2"	1.8	32ft
	3"	1.5	40ft
40W	<b>0" (Standard)</b>	<b>3.0</b>	<b>12ft</b>
	1"	2.2	16ft
	2"	1.8	20ft
	3"	1.5	26ft

\* See page six for details on extended module spacing.

### PERFORMANCE SUMMARY

All data nominal. 3500K test data shown.

Watts/ft	2.0	3.0
Lumens/ft	220	320
Lumens/Watt	110	107

Static Colors

Watts/ft	2.0	3.0
RED Lumens/ft	49	83
RED Lumens/Watt	24	28
GREEN Lumens/ft	164	227
GREEN Lumens/Watt	82	75
BLUE Lumens/ft	40	63
BLUE Lumens/Watt	20	21
AMBER Lumens/ft	87	145
AMBER Lumens/Watt	44	48

### DRIVER REMOTE DISTANCE

	Wire Gauge	Maximum Lead Length
12V Driver	18 AWG	10 ft (3m)
	16 AWG	15 ft (4.5m)
	14 AWG*	25 ft (7.5m)
	12 AWG*	40 ft (12m)

	Wire Gauge	Maximum Lead Length
24V Driver	18 AWG	15 ft (4.5m)
	16 AWG	25 ft (7.5m)
	14 AWG*	40 ft (12m)
	12 AWG*	60 ft (18m)

\* Terminal blocks on the drivers accept 18AWG or 16AWG wire. To use wire gauges larger than 16AWG connect up to 3 ft of 18AWG or 16AWG, then connect 14AWG or 12AWG with UL approved wire nuts up to the maximum lead length in the above tables.

## C3R

RIGID LED LINEAR ACCENT LIGHTING, LOW-POWER  
REMOTE POWER SYSTEM

### ORDERING INFORMATION

Example: **C3R-FL-0-3-27LG-4**

4ft, C3R, Frosted Lens, 3 W/Ft, 2700K, Light Gray

<b>C3</b>	<b>R</b>					<b>LG</b>	
Series	Platform	Optic/Lens/Diffuser	Module Spacing <sup>1</sup>	Watts/Foot	Color Temp	Finish	Fixture Length <sup>2</sup>
<b>C3</b>	<b>R</b> Rigid	<b>CL</b> Clear Lens <b>FL</b> Frosted Lens <b>HD</b> Half Round Frosted Dome Lens	<b>0</b> 0" (Std)  <b>1</b> 1"  <b>2</b> 2"  <b>3</b> 3"	<b>2</b> 2.0 W/ft <b>3</b> 3.0 W/ft  <b>15</b> 1.5W/ft <b>22</b> 2.2W/ft  <b>12</b> 1.2W/ft <b>18</b> 1.8W/ft  <b>1</b> 1.0W/ft <b>15</b> 1.5W/ft	<b>16</b> 1600K <b>20</b> 2000K <b>22</b> 2200K <b>27</b> 2700K <b>30</b> 3000K <b>35</b> 3500K <b>40</b> 4000K <b>50</b> 5000K <b>RD</b> Red (~ 625nm) <b>GR</b> Green (~ 545nm) <b>BL</b> Blue (~ 470nm) <b>AM</b> Amber (~ 590nm)  <b>27H</b> 2700K High CRI (90+) • <b>30H</b> 3000K High CRI (90+) • <b>35H</b> 3500K High CRI (90+) •	<b>LG</b> Light Gray	

#### NOTES:

(1) C3R features 3" modules with zero spacing in between as standard. Module Spacing options of 1", 2" or 3" in between each 3" module is available to reduce wattage per foot and reduce costs. See dimensional information for more details on Module Spacing.

(2) Fixture length measured in feet up to 6 feet max. For half foot increments enter .5 (Example: 5 feet, 6 inches will be 5.5)

- These color temperature selections can be used to comply with California 2016 & 2019 Title 24 JA8 High Efficacy Lighting.



Clear Lens (-CL)



Frosted Lens (-FL)





Half Round Frosted Dome Lens (-HD)

## C3R

RIGID LED LINEAR ACCENT LIGHTING, LOW-POWER  
REMOTE POWER SYSTEM

### SYSTEM INTEGRATION ACCESSORIES

POWER SUPPLIES - 12V Output for 2W/ft Standard LED Spacing Require approved enclosure (by others). See chart on page 2		
<b>PWR-120-EL-040-T</b>	120V AC Input, 12V DC Output, 40W, Triac Dimming (dim to 1%) Lutron Hi-lume 1% 2-wire LED driver, 120V forward phase - LTEA2W; 3.0"W x 1.0"H x 4.9" L	
<b>PWR-120-EL-040-T1</b>	120V AC Input, 12V DC Output, 40W, Triac Dimming (dim to 1%) Lutron Hi-lume 1% 2-wire LED driver, 120V forward phase - LTEA2W; 1.2"W x 1.0"H x 14.25" L	
<b>PWR-UNV-EL-060</b>	120-277V AC Input, 12V DC Output, 60W, Non-Dimming; 1.7"W x 1.3"H x 8.4" L	
<b>PWR-UNV-EL-060-Z</b>	120-277V AC Input, 12V DC Output, 60W, 0-10V Dimming (dim to under 10%); 1.7"W x 1.3"H x 8.4" L	

POWER SUPPLIES - 24V Output for 3W/ft Dense Pack LED Spacing Require approved enclosure (by others). See chart on page 2		
<b>PWR-120-EM-040-T</b>	120V AC Input, 24V DC Output, 40W, Triac Dimming (dim to 1%) Lutron Hi-lume 1% 2-wire LED driver, 120V forward phase - LTEA2W; 3.0"W x 1.0"H x 4.9" L	
<b>PWR-120-EM-040-T1</b>	120V AC Input, 24V DC Output, 40W, Triac Dimming (dim to 1%) Lutron Hi-lume 1% 2-wire LED driver, 120V forward phase - LTEA2W; 1.2"W x 1.0"H x 14.25" L	
<b>PWR-UNV-EM-96-DMX</b>	120-277V AC Input, 24V DC Output, 96W, DMX Dimming; 2.5"W x 1.25"H x 9.6" L	
<b>PWR-UNV-EM-060</b>	120-277V AC Input, 24V DC Output, 60W, Non-Dimming; 1.7"W x 1.2"H x 9.5" L	
<b>PWR-UNV-EM-100</b>	120-277V AC Input, 24V DC Output, 100W, Non-Dimming; 1.7"W x 1.2"H x 9.5" L	
<b>PWR-UNV-EM-100-Z</b>	120-277V AC Input, 24V DC Output, 100W, 0-10V Dimming (dim to under 10%); 1.9"W x 1.3"H x 9.2" L	
<b>PWR-UNV-EM-100-Z-JB</b>	Plenum Rated J-Box Driver, 120-277V AC In, 24V DC Out, 100W, 0-10V Dimming (dim to under 10%); 2.5"W x 1.7"H x 12.4" L	

SURGE SUPPRESSION DEVICE A Tempo furnished surge suppression device must be installed on each supplying branch circuit to comply with 5-year warranty terms		
<b>SSD-120</b>	120V Branch Circuit; 2.9"W x 1.75"H x 3.3" L	
<b>SSD-277</b>	277V Branch Circuit; 2.9"W x 1.75"H x 3.3" L	

POWER & JUMPER FEED CABLES Additional lengths available, contact factory		
<b>PFC3-F-12-36</b>	12V Power Feed Cable, Female Connector, 36 inches (for 2W/ft model)	
<b>PFC3-F-24-36</b>	24V Power Feed Cable, Female Connector, 36 inches (for 3W/ft model)	
<b>JFC3-MF-12-18</b>	12V Jumper Feed Cable, Male/Female Connectors, 18 inches (for 2W/ft model)	
<b>JFC3-MF-24-18</b>	24V Jumper Feed Cable, Male/Female Connectors, 18 inches (for 3W/ft model)	

MOUNTING HARDWARE		
<b>C3A-MTGBRKT-SURF</b>	Set of 25 plastic Mounting Clips (screws included) 18" maximum recommended spacing between mounting clips.	
<b>C3A-MTGBRKT-SURF-20</b>	Set of 25 plastic, 20° Mounting clips (screws included) 18" maximum recommended spacing between mounting clips.	
<b>C3A-MTGBRKT-SHIELD-BD</b>	6 foot Aluminum mounting shield, Clear Bright Dipped finish. Requires C3A-MTGBRKT-SURF brackets sold separate.	
<b>C3A-MTGBRKT-SHIELD-BK</b>	6 foot Aluminum mounting shield, Black finish. Requires C3A-MTGBRKT-SURF brackets sold separate.	
<b>C3A-MTGBRKT-SHIELD-WT</b>	6 foot Aluminum mounting shield, White finish. Requires C3A-MTGBRKT-SURF brackets sold separate.	
<b>C3A-MNTSCREW-BRS</b>	Non Ferrous Brass mounting screw only for C3R mounting clip. (Meets MRI room requirements)	

## C3R

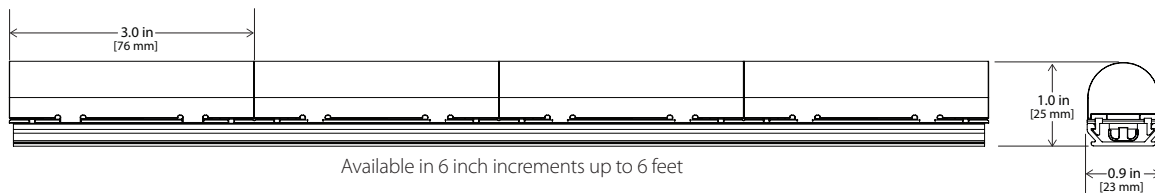
RIGID LED LINEAR ACCENT LIGHTING, LOW-POWER  
REMOTE POWER SYSTEM

### DIMENSIONAL INFORMATION

WITH CLEAR OR FROSTED CONVEX LENS

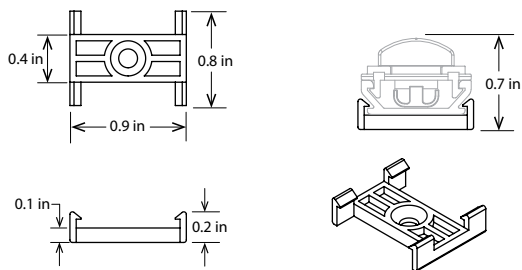


WITH HALF ROUND FROSTED LENS



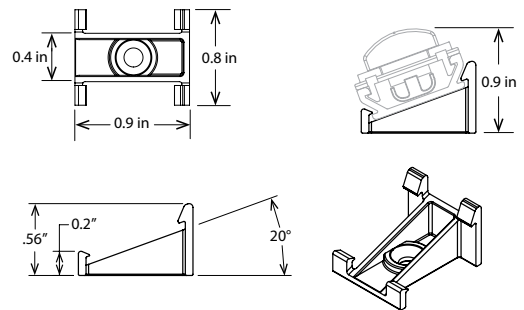
### MOUNTING HARDWARE

#### C3A-MTGBRKT-SURF

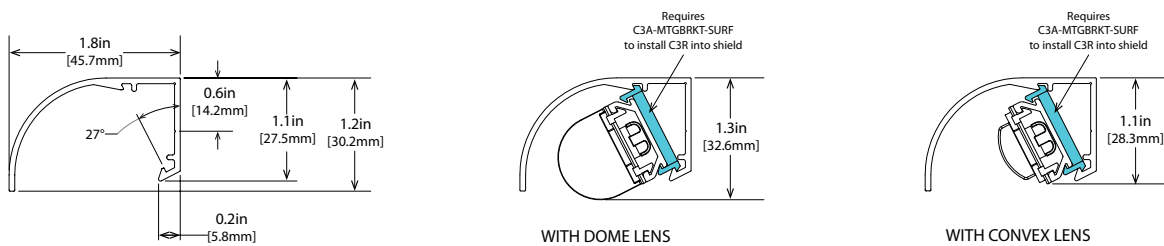


18" maximum recommended spacing between mounting clips.

#### C3A-MTGBRKT-SURF-20



#### C3A-MTGBRKT-SHIELD-BD/BK/WT

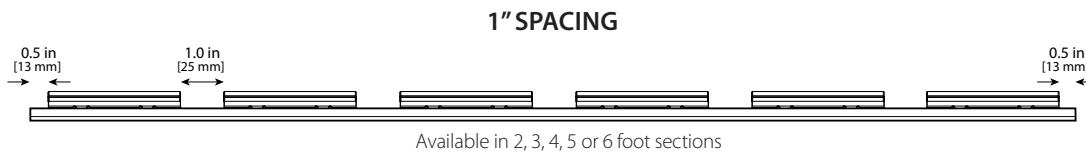


## C3R

RIGID LED LINEAR ACCENT LIGHTING, LOW-POWER  
REMOTE POWER SYSTEM

### DIMENSIONAL & PERFORMANCE INFORMATION WITH EXTENDED MODULE SPACING

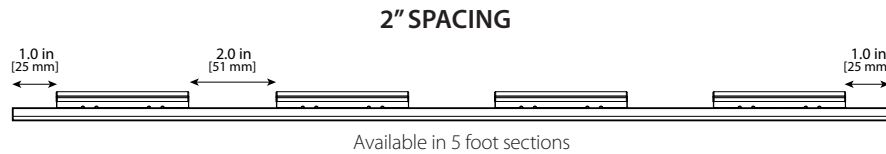
SHOWN WITH CONVEX LENS; SPACING ALSO AVAILABLE WITH HALF DOME LENS



#### PERFORMANCE

All data nominal. 3500K test data

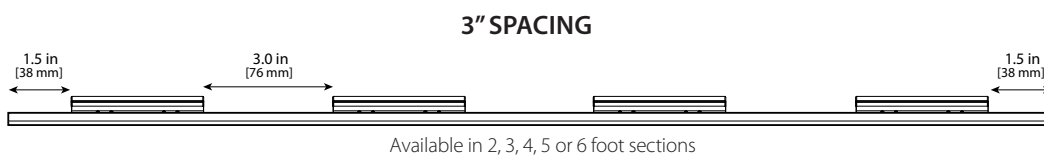
Model	12V	24V
Lumens/ft	165	240
Watts/ft	1.5	2.2



#### PERFORMANCE

All data nominal. 3500K test data

Model	12V	24V
Lumens/ft	138	200
Watts/ft	1.2	1.8



#### PERFORMANCE

All data nominal. 3500K test data

Model	12V	24V
Lumens/ft	110	160
Watts/ft	1.0	1.5